

Library  
Director

Tech.Serv.  
Mgr

Youth Svcs.  
Librarian

Sr. Library  
Asst.

PT Sr.  
Library Asst.

PT Sr.  
Library Asst.

PT Library  
Asst.

PT Library  
Asst.

PT Library  
Asst.

PT Library  
Asst.

**Cent. Hall  
Mgr/SAR**



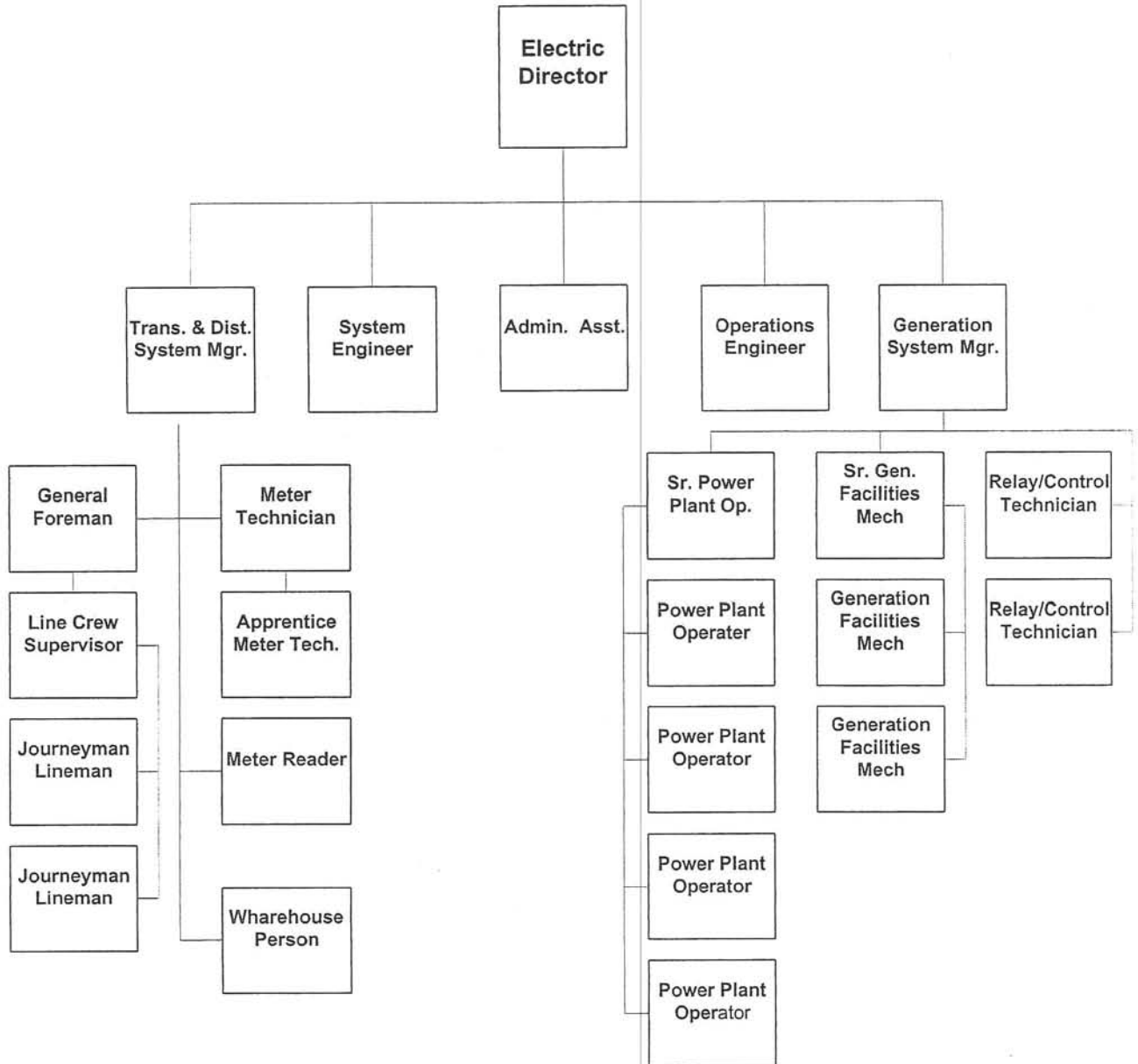
**Building  
Supervisor**

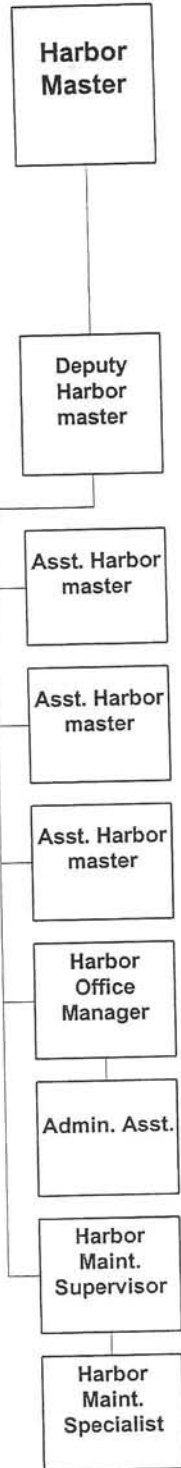


**Building  
Attendant**

**PT Building  
Attendant**

**PT Building  
Attendant**





**CITY AND BOROUGH OF SITKA  
STAFFING TABLE**

<u>DEPARTMENT</u>	<u>POSITION</u>	<u>FTE</u>	<u>GRADE</u>	<u>PAY</u>
1 ADMINISTRATION	1 Administrator	1	42 \$	57.69
	2 Government Relations Director	1	34 \$	42.42
	3 Municipal Deputy Clerk	0.5	28 \$	24.14
	4 Human Resource Director	1	37 \$	42.36
	5 Admin. Service Coordinator	0.75	25 \$	23.02
2 ASSESSING	1 Assessor	1	33 \$	42.46
	2 Prop Tax Clerk	1	\$	25.20
3 CENTENNIAL BLDG	1 Cent. Bldg. Manager	1	27 \$	32.46
	2 Cent. Bldg. Supervisor	1	\$	23.96
	3 Cent. Bldg. Attendant	1	\$	16.59
	4 Cent. Bldg. Attendant	0.5	\$	13.95
	5 Cent. Bldg. Attendant	0.5	\$	13.95
4 MUNICIPAL CLERK	1 Municipal Clerk	1	34 \$	42.42
	2 Municipal Deputy Clerk	0.5	28 \$	24.14
	3 Admin Service Coordinator	0.25	25 \$	23.02
5 MANAGEMENT INFORMATION SYSTEMS	1 Information Systems Director	1	34 \$	41.41
	2 Information Systems Analyst	1	30 \$	33.24
	3 PC Technician	1	\$	22.21
6 ELECTRIC	1 Electric Utility Director	1	42 \$	51.74
	2 Electric Generation System Manager	1	40 \$	54.14
	3 T&D System Manager	1	40 \$	47.31
	4 Sr. Electrical Engineer	1	40 \$	50.28
	5 General Engineer	1	40 \$	51.88
	6 General Foreman	1	\$	44.47
	7 Line Foreman	1	\$	42.06
	8 Journeyman Lineman	1	\$	39.39
	9 Journeyman Lineman	1	\$	39.39
	10 Electric Warehouse Person	1	\$	29.54
	11 Admin Assistant - Electric	1	21 \$	17.14
	12 Sr. Gen Facilities Mechanic	1	\$	39.92
	13 Gen Facilities Mechanic	1	\$	36.87
	14 Gen Facilities Mechanic	1	\$	36.87
	15 Relay/Control Technician	1	\$	39.39
	16 Relay/Control Technician	1	\$	39.39
	17 Sr. Power Plant Operator	1	\$	39.39
	18 Power Plant Operator	1	\$	36.87
	19 Power Plant Operator	1	\$	36.87
	20 Power Plant Operator	1	\$	36.87
	21 Power Plant Operator	1	\$	36.87
	22 Meter Technician	1	\$	-
	23 Meter Technician	1	\$	39.39
	24 Meter Reader	1	\$	17.73
7 FINANCE DEPARTMENT				
1 ACCOUNTING				
	1 Finance Director	1	42 \$	49.45
	2 Controller	1	38 \$	42.10

**CITY AND BOROUGH OF SITKA  
STAFFING TABLE**

<u>DEPARTMENT</u>	<u>POSITION</u>	<u>FTE</u>	<u>GRADE</u>	<u>PAY</u>
	3 Senior Accountant	1	32 \$	32.76
	4 Accountant	1	29 \$	30.48
	5 Grant Accountant	1	29 \$	26.30
	6 Payroll Specialist	1	26 \$	27.66
	7 Accounting Clerk - A/P	1	\$	21.17
	8 Accounting Clerk - Sales Tax	1	\$	22.80
	9 Accounting Clerk - A/R Collections	1	\$	25.14
	10 Utility/Harbor Billing Clerk	1	\$	23.96
	11 Billing Clerk	1	\$	17.39
	12 Sales Tax Auditor	1	28 \$	25.66
2 BUDGET	1 Budget/Treasury Officer	1	31 \$	31.20
	2 Deputy Budget/Treasury Officer	1	\$	22.74
3 TREASURY	1 Sr. Customer Service Rep.	1	\$	19.10
	2 Customer Service Rep.	1	\$	15.01
8 FIRE	1 Fire Chief	1	37 \$	39.34
	2 Assistant Fire Chief	1	30 \$	34.91
	3 EMS/ Fire Captain	1	29 \$	30.89
	4 Engineer/Mechanic	1	\$	29.09
	5 Engineer	1	\$	25.10
	6 Engineer	1	\$	23.90
	7 Engineer	1	\$	29.12
	8 Engineer	1	\$	31.37
	9 Engineer	1	\$	25.10
	10 Office Assistant	0.5	\$	16.97
9 HARBOR	1 Harbormaster	1	34 \$	31.56
	2 Deputy Harbormaster	1	28 \$	25.99
	3 Harbor Maint. Supervisor	1	\$	29.12
	4 Assistant Harbormaster	1	\$	25.80
	5 Assistant Harbormaster	1	\$	18.27
	6 Assistant Harbormaster	1	\$	20.16
	7 Harbor Maintenance Specialist	1	\$	21.15
	8 Harbor Office Manager	1	\$	19.67
	9 Admin Assistant - Harbor	1	\$	16.14
10 LEGAL DEPARTMENT	1 Attorney	1	41 \$	49.58
	2 Legal Assistant	1	25 \$	20.86
11 LIBRARY	1 Library Director	1	32 \$	32.38
	2 Youth Services Librarian	1	\$	23.31
	3 Library Tech Services Mgr.	1	\$	30.57
	4 Sen. Lib. Asst. - Loan	1	\$	20.16
	5 Sen. Lib. Asst. - Acquis.	0.625	\$	19.19
	6 Library Assistant	0.7	\$	19.21
	7 Library Assistant	0.425	\$	16.91
	8 Library Assistant	0.675	\$	15.39
	9 Library Assistant	0.3625	\$	15.39
	10 Library Assistant	0.4	\$	15.77
12 PLANNING	1 Planning Director	1	35 \$	41.38
	2 Planner I	1	28 \$	22.42

**CITY AND BOROUGH OF SITKA  
STAFFING TABLE**

<u>DEPARTMENT</u>	<u>POSITION</u>	<u>FTE</u>	<u>GRADE</u>	<u>PAY</u>
13 POLICE				
	1 Police Chief	1	37 \$	45.62
	2 Lieutenant	1	33 \$	39.43
	3 Lieutenant	1	33 \$	39.43
	4 Sergeant	1	\$	35.89
	5 Sergeant	1	\$	37.72
	6 Sergeant	1	\$	30.85
	7 Sergeant	1	\$	32.41
	8 SEACAD Officer (Grant)	1	\$	30.82
	9 Detective	1	\$	29.48
	10 Police Officer	1	\$	26.05
	11 Police Officer	1	\$	26.05
	12 Police Officer	1	\$	28.06
	13 Detective	1	\$	28.76
	14 Police Officer	1	\$	30.21
	15 Police Officer	1	\$	28.76
	16 Police Officer	1	\$	26.05
	17 Police Officer	0.5	\$	28.06
	18 Police Officer	1	\$	26.05
	19 Police Officer	1	\$	26.05
	20 Police Technician	1	\$	31.04
	21 Dispatch & Records Supervisor	1	\$	29.03
	22 Admin Assistant - Police	1	22 \$	21.41
	23 Dispatch & Records Clerk	1	\$	19.49
	24 Dispatch & Records Clerk	1	\$	20.99
	25 Dispatch & Records Clerk	0	\$	-
	26 Dispatch & Records Clerk	1	\$	22.49
	27 Dispatch & Records Clerk	1	\$	19.49
	28 Jail Officer	1	\$	24.27
	29 Jail Officer	1	\$	19.01
	30 Jail Officer	1	\$	22.49
	31 Jail Officer	1	\$	19.01
	32 Jail Officer	0	\$	-
	33 Animal Control Officer	1	\$	22.49
	34 Multi-Service Officer	1	\$	27.01
(FUNDING LISTED IN FUND 158)	Domestic Violence Unit Grant Positions			
	Domestic Violence Investigator			
14 PUBLIC WORKS				
	1 ADMINISTRATION			
	1 Public Works Director	1	42 \$	49.28
	2 Deputy Public Works Director	1	41 \$	46.66
	2 PUBLIC WORKS			
	1 City & Borough Engineer	1	40 \$	47.86
	2 City & Borough Engineer	1	40 \$	47.86
	3 Operations Chief	1	38 \$	41.31
	4 Building Official	1	35 \$	33.96
	5 Project Manager	1	31 \$	29.36
	6 Building Inspector	0.2	31 \$	23.64
	7 Building Inspector	1	\$	29.04
	8 Engineering Drafting Manager	0.5	\$	27.00
	9 Engineering Drafting Manager	0.5	\$	23.30
	10 Contract Coordinator	1	28 \$	28.70
	11 Parks/Rec Manager	1	29 \$	27.98

**CITY AND BOROUGH OF SITKA  
STAFFING TABLE**

<u>DEPARTMENT</u>	<u>POSITION</u>	<u>FTE</u>	<u>GRADE</u>	<u>PAY</u>
	12 Executive Assistant	1	22 \$	18.01
	13 SMC Site Manager	0.5	30 \$	17.00
3 ENVIRONMENTAL				
	1 Environmental Superintendent	1	37 \$	50.34
	WASTEWATER TREATMENT			
	1 Chief WW Facilities Operator	1	\$	36.30
	2 WW Facilities Operator	1	\$	22.73
	3 Apprentice W/WW Facilities Electrician	1	\$	29.04
	4 WW Facilities Operator	1	\$	25.73
	5 WW Facilities Operator	1	\$	22.73
	6 SMC WW Facilities Operator	1	\$	25.73
	WATER			
	1 W & WW Facilities Electrician	1	\$	36.30
	2 Chief Water Facilities Operator	1	\$	29.79
	3 Water Treatment Operator	1	\$	24.49
	4 Sr. Water Facilities Operator	1	\$	27.68
4 MAINTENANCE				
	1 Public Works Maint. Superintendent	1	36 \$	39.37
	2 Heavy Equipment Operator	1	\$	21.64
	3 Streets Foreman	1	\$	29.10
	4 Assistant Groundskeeper	1	\$	18.69
	5 Groundskeeper	1	\$	25.10
	6 Heavy Equipment Mechanic	1	\$	23.88
	7 Chief Heavy Equipment Mechanic	1	\$	26.35
	8 Mechanic Assistant	0.5	\$	15.00
	9 Facilities Manager	1	31 \$	31.62
	10 Bldg Maintenance Spec.	1	\$	25.73
	11 Bldg Maintenance Spec.	1	\$	25.73
	12 Bldg Maintenance Worker	0.5	\$	16.00
	13 Public Works Maint. Worker	1	\$	21.65
	14 Public Works Maint. Worker	1	\$	21.65
	15 SW Equipment Operator	1	\$	21.64
	16 Asst. Scrapyard Operator	1	\$	19.63
	FTE POSITIONS	154.888		

**This page intentionally left blank.**