

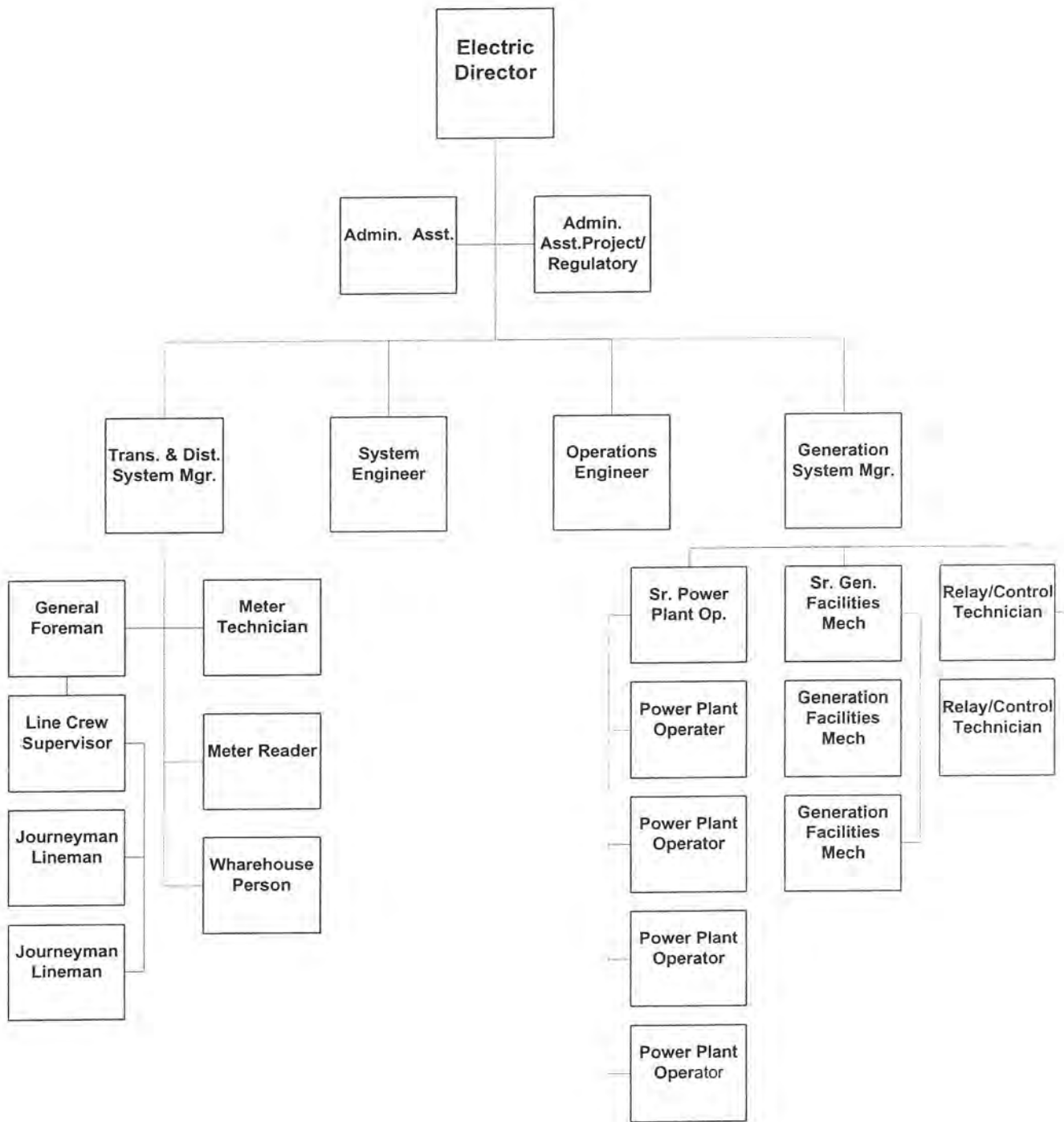
Cent. Hall
Mgr/SAR

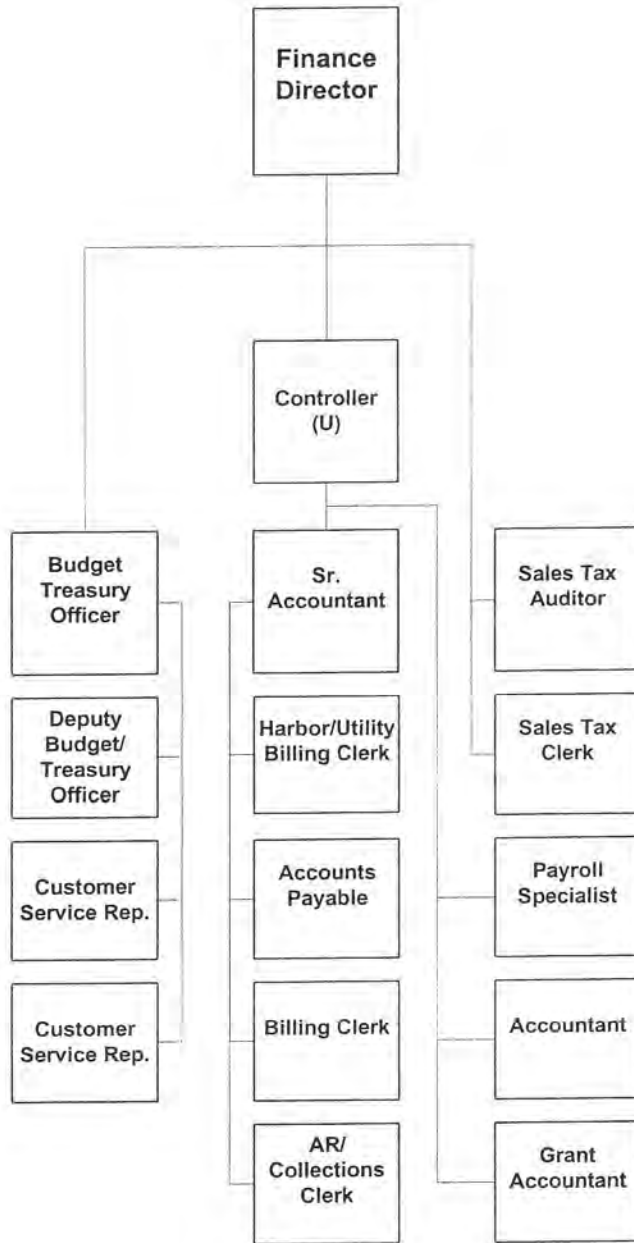
Building
Supervisor

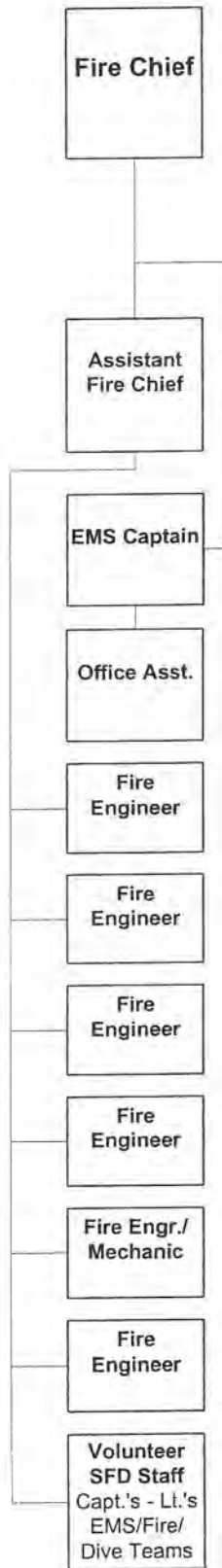
Building
Attendant

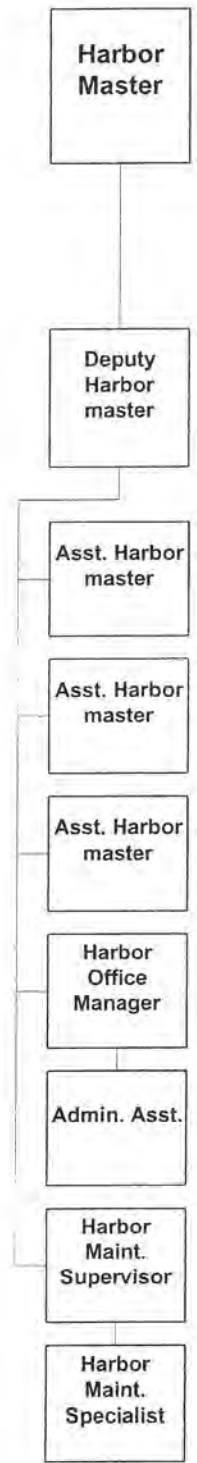
PT Building
Attendant

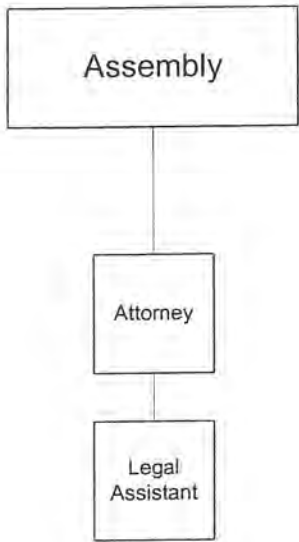
PT Building
Attendant

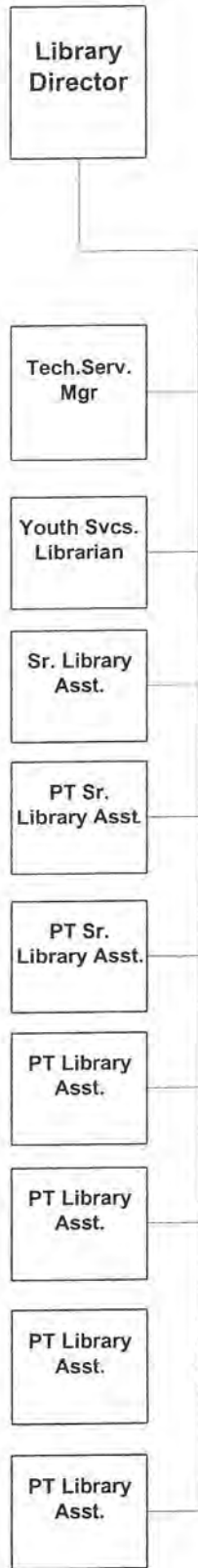


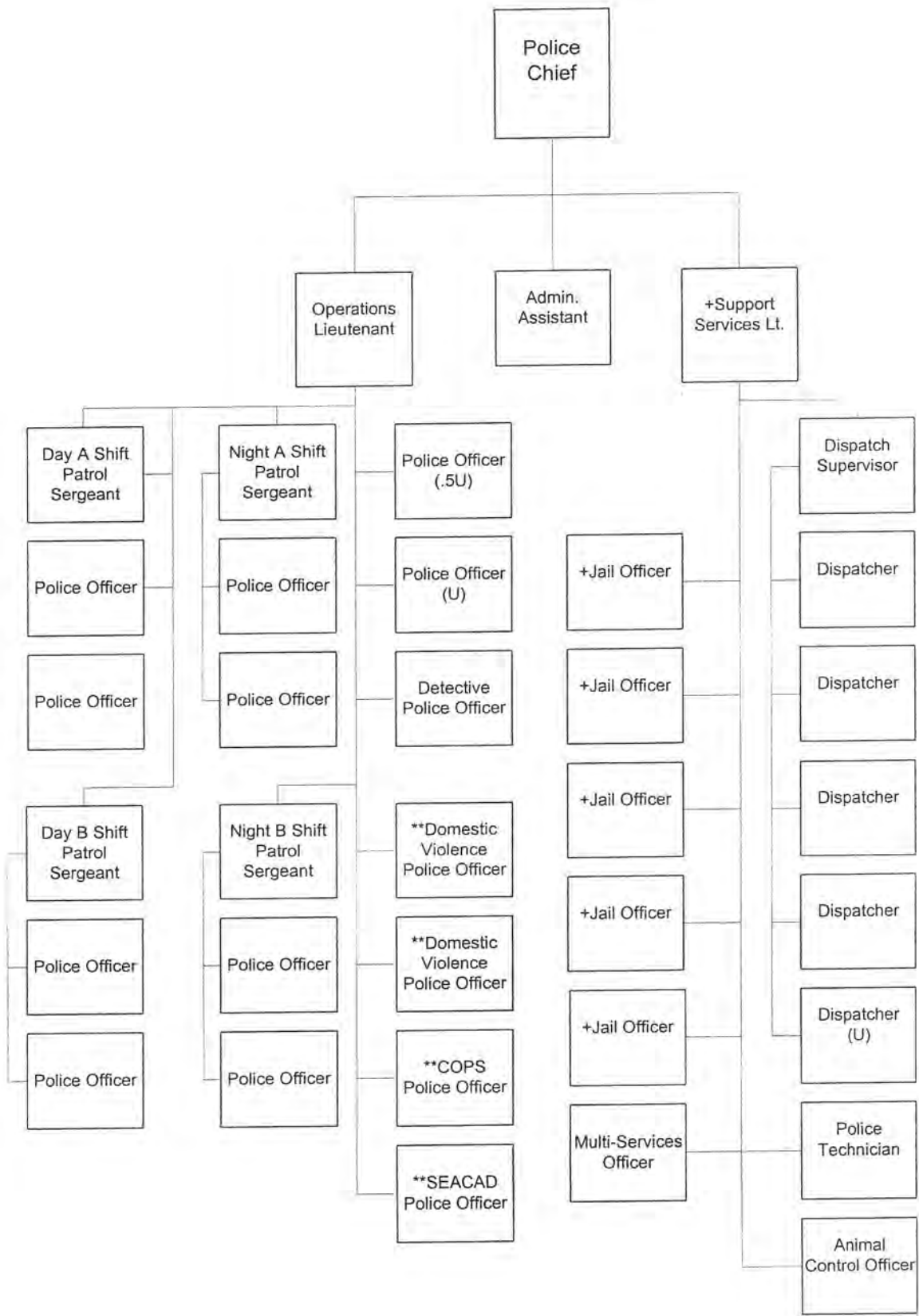


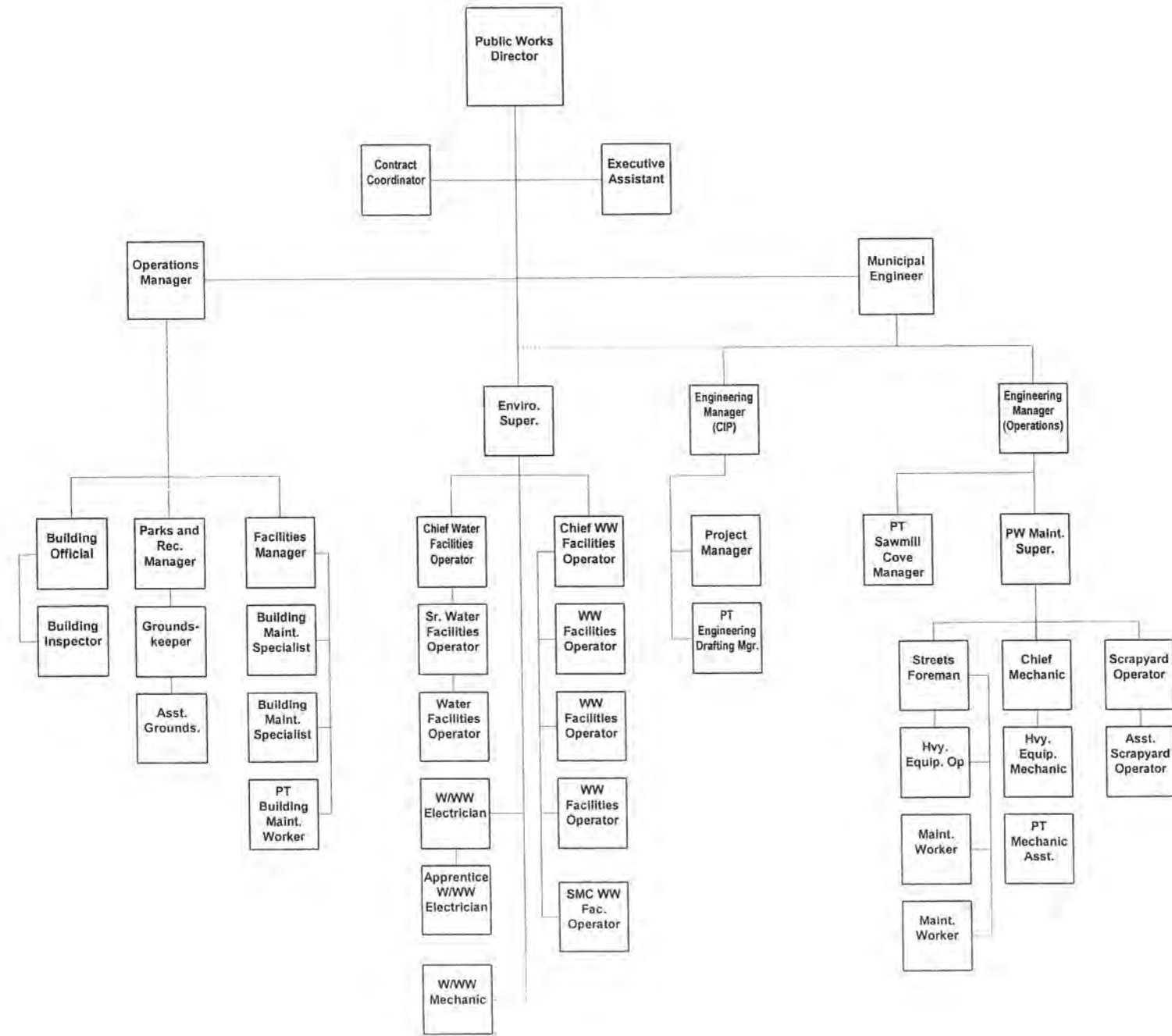












**CITY AND BOROUGH OF SITKA
STAFFING TABLE**

<u>DEPARTMENT</u>	<u>POSITION</u>	<u>FTE</u>	<u>GRADE</u>	<u>PAY</u>
1 ADMINISTRATION	1 Administrator	1	42	\$ 57.70
	2 Government Relations Director	1	34	\$ 42.42
	3 Municipal Deputy Clerk	0.5	28	\$ 24.75
	4 Human Resource Director	1	37	\$ 41.33
2 ASSESSING	1 Assessor	1	33	\$ 42.46
	2 Prop Tax Clerk	1		\$ 19.99
3 CENTENNIAL BLDG	1 Cent. Bldg. Manager	1	27	\$ 32.46
	2 Cent. Bldg. Supervisor	1		\$ 23.96
	3 Cent. Bldg. Attendant	1		\$ 16.59
	4 Cent. Bldg. Attendant	0.5		\$ 13.95
	5 Cent. Bldg. Attendant	0.5		\$ 13.95
4 MUNICIPAL CLERK	1 Municipal Clerk	1	34	\$ 42.42
	2 Municipal Deputy Clerk	0.5	28	\$ 24.75
5 MANAGEMENT INFORMATION SYSTEMS	1 Information Systems Director	1	34	\$ 41.41
	2 Information Systems Analyst	1	30	\$ 33.24
	3 PC Technician	1		\$ 22.21
6 ELECTRIC	1 Electric Utility Director	1	42	\$ 54.20
	2 Electric Generation System Manager	1	40	\$ 54.14
	3 T&D System Manager	1	40	\$ 48.49
	4 Sr. Electrical Engineer	1	40	\$ 50.28
	5 General Engineer	1	40	\$ 51.88
	6 General Foreman	1		\$ 44.48
	7 Line Foreman	1		\$ 42.07
	8 Journeyman Lineman	1		\$ 39.39
	9 Journeyman Lineman	1		\$ 39.39
	10 Electric Warehouse Person	1		\$ 29.54
	11 Admin Assistant - Electric	1	21	\$ 17.14
	12 Project & Regulatory Admin. Asst.	1	25	\$ 23.60
	13 Sr. Gen Facilities Mechanic	1		\$ 39.92
	14 Gen Facilities Mechanic	1		\$ 36.87
	15 Gen Facilities Mechanic	1		\$ 36.87
	16 Relay/Control Technician	1		\$ 39.39
	17 Relay/Control Technician	1		\$ 39.39
	18 Sr. Power Plant Operator	1		\$ 39.39
	19 Power Plant Operator	1		\$ 36.87
	20 Power Plant Operator	1		\$ 36.87
	21 Power Plant Operator	1		\$ 36.87
	22 Power Plant Operator	1		\$ 36.87
	23 Meter Technician	1		\$ -
	24 Meter Technician	1		\$ 39.39
	25 Meter Reader	1		\$ 21.66

**CITY AND BOROUGH OF SITKA
STAFFING TABLE**

<u>DEPARTMENT</u>	<u>POSITION</u>	<u>FTE</u>	<u>GRADE</u>	<u>PAY</u>
7 FINANCE DEPARTMENT				
	1 ACCOUNTING			
	1 Finance Director	1	42	\$ 49.45
	2 Controller	0	38	\$ -
	3 Senior Accountant	1	32	\$ 32.76
	4 Accountant	1	29	\$ 30.48
	5 Grant Accountant	1	29	\$ 26.30
	6 Payroll Specialist	1	26	\$ 27.66
	7 Accounting Clerk - A/P	1		\$ 21.17
	8 Accounting Clerk - Sales Tax	1		\$ 22.80
	9 Accounting Clerk - A/R Collections	1		\$ 25.14
	10 Utility/Harbor Billing Clerk	1		\$ 23.96
	11 Billing Clerk	1		\$ 17.39
	12 Sales Tax Auditor	1	28	\$ 25.66
	2 BUDGET			
	1 Budget/Treasury Officer	1	31	\$ 31.20
	2 Deputy Budget/Treasury Officer	1		\$ 22.74
	3 TREASURY			
	1 Customer Service Rep.	0.5		\$ 19.10
	2 Customer Service Rep.	1		\$ 15.39
8 FIRE				
	1 Fire Chief	1	37	\$ 37.44
	2 Assistant Fire Chief	1	30	\$ 34.91
	3 EMS/ Fire Captain	1	29	\$ 32.81
	4 Engineer/Mechanic	1		\$ 29.09
	5 Engineer	1		\$ 25.10
	6 Engineer	1		\$ 23.90
	7 Engineer	1		\$ 29.12
	8 Engineer	1		\$ 31.37
	9 Engineer	1		\$ 25.10
	10 Office Assistant	0.5		\$ 16.97
9 HARBOR				
	1 Harbormaster	1	34	\$ 31.56
	2 Deputy Harbormaster	1	28	\$ 16.75
	3 Harbor Maint. Supervisor	1		\$ 29.12
	4 Assistant Harbormaster	1		\$ 25.80
	5 Assistant Harbormaster	1		\$ 18.27
	6 Assistant Harbormaster	1		\$ 20.16
	7 Harbor Maintenance Specialist	1		\$ 21.15
	8 Harbor Office Manager	1		\$ 19.67
	9 Admin Assistant - Harbor	1		\$ 16.14
10 LEGAL DEPARTMENT				
	1 Attorney	1	41	\$ 49.58
	2 Legal Assistant	1	25	\$ 20.86
11 LIBRARY				
	1 Library Director	1	32	\$ 32.38
	2 Youth Services Librarian	1		\$ 23.31
	3 Library Tech Services Mgr.	1		\$ 30.57
	4 Sen. Lib. Asst. - Loan	1		\$ 20.16
	5 Sen. Lib. Asst. - Acquis.	0.625		\$ 19.19
	6 Library Assistant	0.7		\$ 19.21
	7 Library Assistant	0.425		\$ 16.91
	8 Library Assistant	0.675		\$ 15.39
	9 Library Assistant	0.3625		\$ 14.00
	10 Library Assistant	0.4		\$ 14.00
12 PLANNING				
	1 Planning Director	1	35	\$ 41.38
	2 Planner I	1	28	\$ 22.98

**CITY AND BOROUGH OF SITKA
STAFFING TABLE**

<u>DEPARTMENT</u>	<u>POSITION</u>	<u>FTE</u>	<u>GRADE</u>	<u>PAY</u>
13 POLICE	1 Police Chief	1	37	\$ 45.62
	2 Lieutenant	1	33	\$ 39.43
	3 Lieutenant	1	33	\$ 39.43
	4 Sergeant	1		\$ 35.89
	5 Sergeant	1		\$ 30.85
	6 Sergeant	1		\$ 32.41
	7 Sergeant	1		\$ 29.48
	8 SEACAD Officer (Grant)	1		\$ 30.82
	9 Detective	1		\$ 28.76
	10 Police Officer	0		\$ -
	11 Police Officer	1		\$ 26.05
	12 Police Officer	1		\$ 26.05
	13 Police Officer	1		\$ 28.06
	14 Police Officer - K-9	1		\$ 29.48
	15 Police Officer	1		\$ 30.21
	16 Police Officer	1		\$ 26.05
	17 Police Officer	0.5		\$ 27.37
	18 Police Officer	1		\$ 26.70
	19 Police Officer	1		\$ 26.05
	20 Poice Officer - COPS	1		\$ 25.00
	21 Police Technician	1		\$ 31.04
	22 Dispatch & Records Supervisor	1		\$ 29.03
	23 Admin Assistant - Police	1	22	\$ 21.41
	24 Dispatch & Records Clerk	1		\$ 19.49
	25 Dispatch & Records Clerk	1		\$ 20.99
	26 Dispatch & Records Clerk	0		\$ -
	27 Dispatch & Records Clerk	1		\$ 22.49
	28 Dispatch & Records Clerk	1		\$ 19.49
	29 Jail Officer	1		\$ 24.27
	30 Jail Officer	1		\$ 19.01
	31 Jail Officer	1		\$ 22.49
	32 Jail Officer	1		\$ 19.01
	33 Jail Officer	1		\$ 19.01
	34 Animal Control Officer	1		\$ 22.94
	35 Multi-Service Officer	1		\$ 27.85
(FUNDING LISTED IN FUND 158)	Domestic Violence Unit Grant Positions			
	36 Domestic Violence Investigator			
	37 Domestic Violence Investigator			
14 PUBLIC WORKS				
	1 ADMINISTRATION			
	1 Public Works Director	1	42	\$ 49.52
	2 PUBLIC WORKS			
	1 City & Borough Engineer	1	41	\$ 47.86
	2 Engineer Manager (Operations)	1	40	\$ 46.69
	3 Engineer Manager (CIP)	1	40	\$ 43.35
	4 Building and Grounds Manager	1	38	\$ 41.31
	5 Building Official	1	35	\$ 30.80
	6 Project Manager	1	31	\$ 29.36
	7 Building Inspector	0	31	\$ -
	8 Building Inspector	1		\$ 29.04
	9 Engineering Drafting Manager	0.5		\$ 27.00
	10 Engineering Drafting Manager	0		\$ -
	11 Contract Coordinator	1	28	\$ 28.70
	12 Parks/Rec Manager	1	29	\$ 27.99
	13 Executive Assistant	1	22	\$ 18.01
	14 SMC Site Manager	0.5	30	\$ 20.32

**CITY AND BOROUGH OF SITKA
STAFFING TABLE**

<u>DEPARTMENT</u>	<u>POSITION</u>	<u>FTE</u>	<u>GRADE</u>	<u>PAY</u>
3 ENVIRONMENTAL	1 Environmental Superintendent	1	37	\$ 50.34
	WASTEWATER TREATMENT			
	1 Chief WW Facilities Operator	1		\$ 36.30
	2 WW Facilities Operator	1		\$ 22.73
	3 Apprentice W/WW Facilities Electrician	1		\$ 32.67
	4 WW Facilities Operator	1		\$ 25.73
	5 WW Facilities Operator	1		\$ 22.73
	6 SMC WW Facilities Operator	1		\$ 25.73
	WATER			
	1 W & WW Facilities Electrician	1		\$ 36.30
	2 W & WW Facilities Mechanic	1		\$ 34.40
	3 Chief Water Facilities Operator	1		\$ 29.79
	4 Water Treatment Operator	1		\$ 24.49
	5 Sr. Water Facilities Operator	1		\$ 27.68
4 MAINTENANCE	1 Public Works Maint. Superintendent	1	36	\$ 39.37
	2 Heavy Equipment Operator	1		\$ 21.64
	3 Streets Foreman	1		\$ 29.10
	4 Assistant Groundskeeper	1		\$ 18.69
	5 Groundskeeper	1		\$ 25.10
	6 Heavy Equipment Mechanic	1		\$ 23.88
	7 Chief Heavy Equipment Mechanic	1		\$ 26.35
	8 Mechanic Assistant	0.5		\$ 16.50
	9 Facilities Manager	1	31	\$ 31.62
	10 Bldg Maintenance Spec.	1		\$ 25.73
	11 Bldg Maintenance Spec.	1		\$ 25.73
	12 Bldg Maintenance Worker	0.5		\$ 17.00
	13 Public Works Maint. Worker	1		\$ 21.65
	14 Public Works Maint. Worker	1		\$ 21.65
	15 SW Equipment Operator	1		\$ 21.64
	16 Asst. Scrapyard Operator	1		\$ 19.63
	FTE POSITIONS	154.688		