

CITY AND BOROUGH OF SITKA

A COAST GUARD CITY

PLANNING AND COMMUNITY DEVELOPMENT DEPARTMENT

100 Lincoln Street | Sitka, Alaska 99835

www.cityofsitka.com

planning@cityofsitka.org

907-747-1814

SITKA HISTORIC PRESERVATION COMMISSION

Regular Monthly Meeting

Harrigan Centennial Hall

June 10, 2026 6:00 p.m.

AGENDA

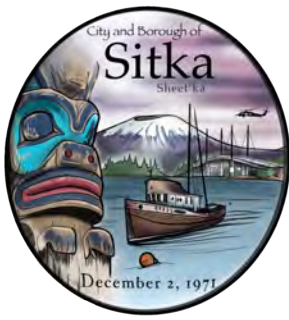
- I. CALL TO ORDER & ROLL CALL**
- II. CONSIDERATION OF THE AGENDA**
- III. CONSIDERATION OF THE MINUTES**
 - a. Approve the May 13, 2026 meeting minutes.
- IV. PERSONS TO BE HEARD**

Public participation on any item OFF the agenda not to exceed three minutes.
- V. REPORTS & CORRESPONDENCE**

Chair, Commissioners, Staff Liaison, Assembly Liaison
- VI. UNFINISHED BUSINESS**
- VII. NEW BUSINESS**
 - b. Review and recommendation of a Starlink installation and screening fence at 107 Cathedral Way.
- VIII. SET NEXT MEETING DATE(S):**

(2nd Wednesday of the Month, 6:00 p.m. Harrigan Centennial Hall)
Wednesday, July 8, 2026 – Regular Monthly Meeting
- IX. PERSONS TO BE HEARD**

Public participation on any item ON or OFF the agenda not to exceed three minutes.
- X. ADJOURNMENT**



CITY AND BOROUGH OF SITKA

A COAST GUARD CITY

PLANNING AND COMMUNITY DEVELOPMENT DEPARTMENT

100 Lincoln Street | Sitka, Alaska 99835

www.cityofsitka.com

planning@cityofsitka.org

907-747-1814

SITKA HISTORIC PRESERVATION COMMISSION

Regular Monthly Meeting

Harrigan Centennial Hall

May 13, 2026 6:15 p.m.

DRAFT MINUTES

I. CALL TO ORDER & ROLL CALL

Present: Roby Koolyéik Littlefield (Chair), Yeidikook'áa Dionne Brady-Howard (Vice Chair; via Zoom), James K_ushx_eet Poulson, Karen Lucas, Nicole Fiorino (via Zoom), Amanda Bauer, Scott Saline (Assembly Liaison)

Absent: Steve Íxt'ík Éesh Johnson

Staff: Kim Davis

Public: None

Chair Littlefield called the meeting to order at 6:18 p.m.

II. CONSIDERATION OF THE AGENDA

M-Poulson/S-Lucas moved to approve the May 13, 2026 meeting agenda. Motion passed 6-0 by voice vote.

III. CONSIDERATION OF THE MINUTES

a. Approve the April 8, 2026 meeting minutes

M-Poulson/S-Bauer moved to approve the April 8, 2026 meeting minutes. Motion passed 6-0 by voice vote.

IV. PERSONS TO BE HEARD

Public participation on any item OFF the agenda not to exceed three minutes.

V. REPORTS & CORRESPONDENCE

Chair, Commissioners, Staff Liaison, Assembly Liaison

Lucas asked why the Historic Preservation Commission wasn't consulted regarding the street naming policy recently passed by the Assembly. Saline said he would find out more.

Davis said Will would be back in June.

VI. UNFINISHED BUSINESS

None.

VII. NEW BUSINESS

b. Review and recommendation of a window to be replace with an exterior door and construct deck with stairs at 106 Finn Alley.

Davis presented a proposal to replace a window at 106 Finn Alley with an exterior door and deck.

Poulson noted that the property could be part of a historic district given the neighborhood's significance to Finnish history in Sitka. Saline recounted a story he had read in the book *Finns of Alaska* regarding Finnish migrants walking across Russia and observing capital punishment.

No public comment was received and the applicant was not present.

M-Lucas/S-Poulson moved to recommend approval of a window to be replaced with an exterior door and the construction of a deck with stairs at 106 Finn Alley. Motion passed 6-0.

VIII. SET NEXT MEETING DATE(S):

(2nd Wednesday of the Month, 6:00 p.m. Harrigan Centennial Hall)

Wednesday, June 10, 2026 – Regular Monthly Meeting

The commission requested to change the regular meeting time from 6:15 to 6 p.m. for the summer months.

IX. PERSONS TO BE HEARD

Public participation on any item ON or OFF the agenda not to exceed three minutes.

X. ADJOURNMENT

Chair Littlefield adjourned the meeting at 6:44 p.m.

Sitka Historic Preservation Commission

For Request for Review of Potential Impacts to Heritage Resource(s)

A. **Contact Name** Angela Hansen – Alaska Communications
Address 600 Telephone Ave **City** Anchorage **State** AK **Zip** 99503
Phone 907-244-2846 **Fax** _____ **email** angela.hansen@acsalaska.com

B. **Agency undertaking project:** (circle)
 Private **City** _____ **State** _____ **Federal Department** _____

C. **Date Agency received proposed project:** _____

D. **Are Federal funds involved (grants, funding, agency)** yes **no**

E. **Are State funds involved (grants, funding, agency)** yes **no**

F. **Will the project affect a National Historic Landmark or a site in the National Register of Historic Places? (See Appendix A)** yes **no**

G. **Is the site listed in the Alaska Heritage Resource Survey inventory?** yes **no**
If yes, **Site Number** _____ **Preservation Status** _____
(refer to AHRS inventory for more information)

H. **Is the Project within the Sitka Indian Village or Downtown Sitka** **yes** **no**

I. **Build date of current structure** 1959 _____

J. **Describe the proposed project**
Install Starlink Community Gateway on the roof of the Alaska Communications Sitka Central Office Building (107 Cathedral Way)

K. **Purpose/Objectives for the undertaking**
Provide High Speed connectivity to SEARHC/Mt Edgcombe Hospital and other businesses and entities in Sitka over Starlink (see attached for further details)

- L. **Attach:**
- **Copy of a map of the proposed project including latitudinal and longitudinal information**
 - **Property owner information**
 - **Any other pertinent information**

Mail Coversheet and attachments to:
Sitka Historic Preservation Commission
C/O City and Borough of Sitka
100 Lincoln Street
Sitka, Alaska 99835

- Notes to Applicant:
- Review will take place only during regular commission meetings or on an as needed basis.
 - Projects along Lincoln or Katlian Streets will require review with Planning Department staff.
 - The meetings are public and convene the second Wednesday of each month as advertised.
 - Review process may take up to 60 days.
 - The SHPC reserves the right to request additional information and/or time to review projects.

FOR THE CHAIR OF THE HPC ONLY:

ACTION: _____ **SIGNED:** _____ **DATE:** _____

Sitka Starlink Gateway Project Narrative

What is the Starlink Community Gateway?

A Starlink Community Gateway is a large-scale, carrier-grade internet backhaul system from Starlink designed to provide high-capacity internet to an entire town, island, internet service provider (ISP), mobile network, or remote region — not just a single home or business.

Think of it as a mini-internet hub fed by Starlink satellites.

Instead of individual homes and businesses each having a Starlink dish, Alaska Communications (ACS) installs a Community Gateway and then redistributes the internet locally using fiber, fixed wireless, or Wi-Fi networks. Starlink describes it as delivering “fiber-like speeds from space.”

Notably, the Starlink Community Gateway uses a dedicated KA-band spectrum, meaning it does not use the same spectrum as the rest of the Starlink network. This supports our ability to sell dedicated gigabit connectivity to customers who need it.

Purpose of the Installation

The initial purpose is to provide high speed connectivity for Southeast Alaska Regional Health Consortium (SEARHC), which recently opened the new Mt. Edgecumbe Medical Center in Sitka. ACS will also be able to provide other businesses and entities in Sitka services over this connectivity, as well.

In Sitka, it will also provide critical carrier diversity and gigabit connectivity for the broader community.

Why SEARHC Chose this Solution

This connectivity plays a key role in allowing SEARHC to deliver high-quality care to the community of Sitka. SEARHC has historically faced connectivity challenges and bandwidth constraints in Sitka, meaning a single service interruption can bring operations to a halt. For example, when a cut and outage occurred on the subsea fiber into Sitka, SEARHC and other organizations in Sitka experienced major disruptions to their operations and continuity of service in the community.

Low-Earth Orbit (LEO) satellite services like Starlink have proven to be a lifeline for people and organizations all over the state in times of prolonged outages, but standard “best-effort” satellite terminals won’t support SEARHC’s goal of uninterrupted patient care. By bringing a Starlink Community Gateway to Sitka, Alaska Communications will be able to provide dedicated, symmetric connectivity for Mt. Edgecumbe Medical Center. ACS’s solution is designed entirely with ACS-owned infrastructure to deliver a true carrier-diverse connection that minimizes SEARHC’s risks and improves their ability to serve the community of Sitka.

Our solution will minimize or eliminate SEARHC’s reliance on a single high speed service provider in Sitka. That means, in the event of a middle mile fiber cut, SEARHC’s business operations and patient care can continue uninterrupted on our diverse path solution.

Installing a Starlink Gateway in a rural community like Sitka is mainly about giving the entire area access to high-speed internet when traditional infrastructure is too expensive, slow to deploy, or impractical. Running fiber to remote areas can cost millions of dollars. ACS is not aware of any other projects to diversify subsea fiber or other terrestrial-based connectivity to Sitka at this time. The Starlink Gateway is a strategic, effective approach to diversifying and strengthening the connectivity landscape in Sitka.

A Starlink Gateway can provide broadband and diversity without digging hundreds of miles of trench or another subsea cable or microwave radio system. Instead of every business and household buying an individual Starlink dish, ACS can install one Starlink Community Gateway and can have a diverse means of “middle mile” connectivity and still distribute Internet/data service locally via fiber, fixed wireless, or Wi-Fi (using the same methods that we use today). This lowers costs and centralizes management.

Why this Location was Selected

We selected this site because it is ACS’s Central Office (CO) and primary network hub in Sitka, where internet traffic, power, fiber, routing equipment, and customer distribution systems are centralized. The Starlink Gateway would serve as another upstream connection to the ISP network. Key reasons include:

- The Central Office already distributes internet to the community
 - Installing the Starlink Gateway here allows ACS to immediately inject Starlink bandwidth into our existing network.
 - So, the flow becomes: Starlink satellites → Community Gateway at CO → ACS Sitka POP → Local businesses and homes
- Simple integration with existing infrastructure
- Replace or supplement upstream fiber capacity, providing critical carrier diversity
- Better economics for rural broadband
 - A Starlink Gateway can provide high capacity backhaul without waiting years for expensive terrestrial infrastructure projects.
- Lower latency and simpler routing
 - Keeping the Gateway at the CO reduces unnecessary hops because traffic enters the ISP network directly at its routing core. This improves network management, failover, traffic engineering, management and monitoring.
- The rooftop is often ideal for satellite visibility
 - Satellite systems need clear sky exposure, minimal obstructions, stable mounting
- Existing backup generator/power system (Feed ACS Sitka CO)

Existing Telecommunications use of the Property

This location is ACS’s Sitka Telecom CO and is the main local facility where we connect customers to the wider network. It’s the core infrastructure hub for internet service, phone service, fiber networks, mobile backhaul, business circuits, and emergency communication. You can think of it as the telecom equivalent of a local power substation — a place where network traffic is concentrated, switched, and distributed.

In rural communities like Sitka, the CO is the town's primary communications hub; the point where outside connectivity enters the community, and the place where satellite, fiber, or microwave backhaul terminates. That's why the Starlink Community Gateway should be installed here.

Public/Community Benefit

Installing a Starlink Community Gateway can create major public and community benefits, especially in rural, remote, underserved, or disaster-prone areas where traditional broadband infrastructure is limited. The biggest benefit is that it can provide high-capacity internet access to an entire community much faster and more cheaply than building new long-distance fiber, by:

- Expanding broadband access- This helps close the "digital divide."
- Improve schools, healthcare, and emergency services
- Supports economic development
- Provides additional travel / maritime safety
- Helps local ISPs and public utilities
- Supports tribal, island, and remote communities
- Creates shared infrastructure instead of isolated service
- Improves the experience for tourists by providing better mobile and Wi-Fi coverage
- Supports remote workers and "workcation" travelers

Because Sitka is larger and more developed than many nearby communities, a Starlink Gateway there could help distribute connectivity to surrounding areas through regional telecom infrastructure. This could strengthen broadband access across parts of Southeast Alaska.

Efforts made to minimize visual impact

To minimize the visual impact of a Starlink Community Gateway installed on a rooftop, ACS will combine careful placement, architectural screening, color treatment, and low-profile engineering with our installation. We will install the Gateway as far towards the center of the roof as possible and are prepared to install away from public sightlines to reduce visibility from sidewalks and roads. We may use architectural screening that will match the building's architecture and strive to match the existing colors and finishes. A Starlink Gateway can often be positioned within existing utility zones, so it appears part of the building's normal infrastructure.

Because these systems can include multiple satellite antennas, support structures, and equipment cabinets, thoughtful design is especially important in scenic or historic communities like Sitka. We recognize the importance of minimizing visual impact.

Reversible nature of installation

The Starlink Gateway installation is fully reversible, because we will be using non-penetrating tripod mounts (weighted, no roof drilling).

Copy of a map of the proposed project including latitudinal and longitudinal information

Property in question: 107Cathedral Way
57.03.01N by 135.20.07W



Property owner information

107 Cathedral Way

Value Year 2024



CURRENT OWNER		PROPERTY IDENTIFICATION				
Telephone Utilities of Northland 600 Telephone Ave MS#8 Anchorage AK 99503		Parcel #	1-0525-000	Use	C - Commercial	
		City Number		Building Use	Office	
				Service Area		
PROPERTY INFORMATION						
Improvement Size	7,978 SF	Year Built	1959	Land Size	4,905 SF	
Basement Area		Effective Age		Zone	CBD	
Garage Size		Taxable Interest	Fee Simple			
LEGAL DESCRIPTION						
Plat #		Lot #	Pt 4	Block	5	
		Tract		Rec. District	103-Sitka	
Describe	A Portion of Lot 4, Block 5, U.S. Survey 1474				Date Recorded	
EXEMPTION DETAIL						

Renderings of Project Shed View Impact

Renderings of building with proposed antennas mounted on roof

Before



After



Additional view looking south from Seward Street

Before



Rendering of antennas installed on roof from Seward Street view looking south.

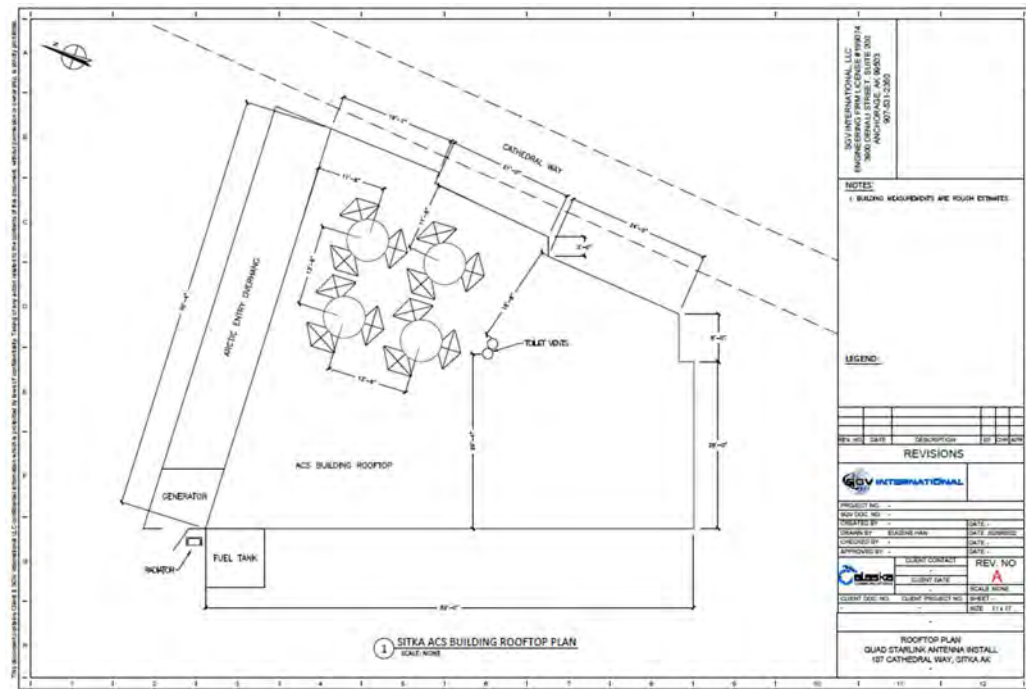
After



Please note that the design does have the antennas located in a pod which would have them located a bit more centrally on the roof. See below



Rooftop drawing with validated dimensions



Potential additional actions to blend antennas into View Shed

Rendering with painted antennas to match building trim.



Rendering with painted antennas and privacy fence to match building trim.



Cathedral Way Street view with exact dimensions of antennas and second drawing with rendition with a privacy fence.



Starlink Community Gateway Documentation



Starlink_Community
_Gateway_Statemen

