

LAKE-HIRST AND MONASTERY-KINKEAD UTILITY AND STREET IMPROVEMENTS PHASE 1

PROJECT PHASING PLAN

LEGEND

- M6 ALIGNMENT CONTROL, SEE SHT. G4
- CP9 SURVEY CONTROL, SEE SHT. G4
- PROJECT BASELINE - ALIGNMENT
- - - RIGHT OF WAY
- - - PROPERTY LOT LINE
- - - SHEET KEY
- EXISTING EASEMENT
- 502 ADDRESS CALLOUT, ALIGNED W/ STREET

- SURVEY NO.**
1. SURVEY PERFORMANCE SEE THE ADDITIONAL SHEETS.
 2. TEMPORARY CONSTRUCTION EASEMENTS & PERMANENT UTILITY EASEMENTS HAVE BEEN OBTAINED FOR THIS PROJECT COORDINATE W/ OWNER TO CONFIRM ALL EASEMENTS & CONDUCT WORK WITHIN EASEMENT BOUNDARIES.
 3. ALIGNMENT HORIZONTAL DATA BASED ON PROJECT NORTH, SEE PROJECT CONTROL TABLES ON SHEET G4.

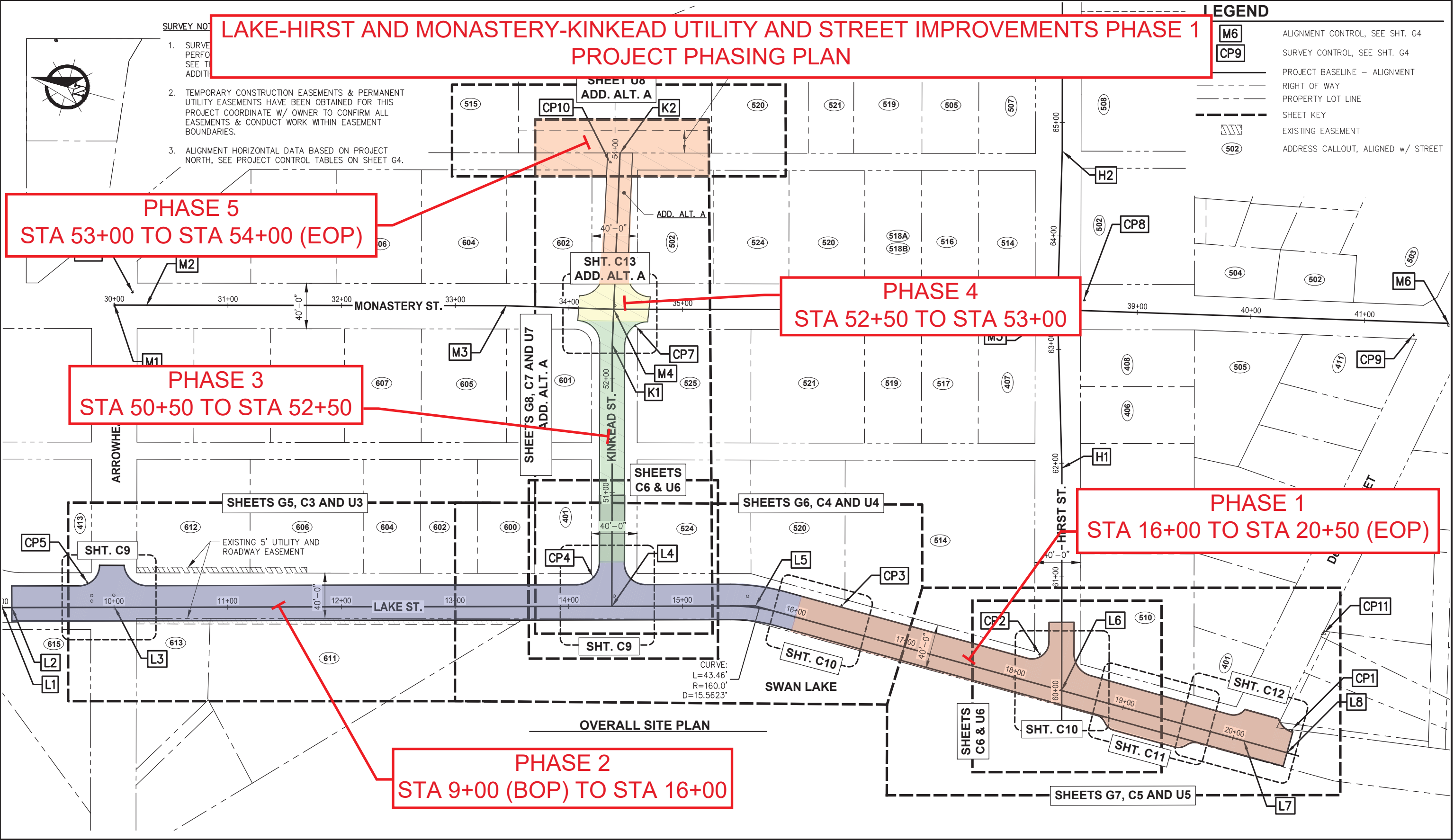
PHASE 5
STA 53+00 TO STA 54+00 (EOP)

PHASE 4
STA 52+50 TO STA 53+00

PHASE 3
STA 50+50 TO STA 52+50

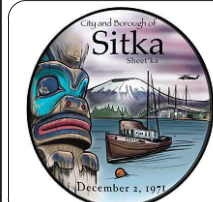
PHASE 1
STA 16+00 TO STA 20+50 (EOP)

PHASE 2
STA 9+00 (BOP) TO STA 16+00



OVERALL SITE PLAN

N:\222xxx\222100 CBS LHM Utility and Street Improvements\G. Drawings\1. Design\1. Civil\14. Lake-Kinkead PHASING PROJECT\G3-G4 Overall Site Plan and SC.dwg - Bbrown - 9/10/2025



City and Borough of Sitka
DEPARTMENT OF PUBLIC WORKS
100 LINCOLN STREET SITKA, ALASKA 99835
TEL (907) 747-1804 FAX (907) 747-3158

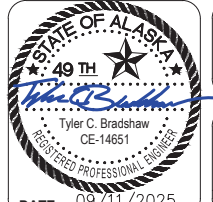
REVISIONS					
REV.	DATE	DESCRIPTION	DWN.	CKD.	APP.

PND
ENGINEERS, INC.

9360 Glacier Highway Suite 100
Juneau, Alaska 99801
Phone: 907-586-2093
Fax: 907-586-2099
www.pndengineers.com

DESIGN: WRB CHECKED: TCB SCALE: 1" = 40'

DRAWN: WRB APPROVED: TCB SCALE IN FEET



CITY AND BOROUGH OF SITKA, ALASKA
LAKE-HIRST AND MONASTERY-KINKEAD
UTILITY AND STREET IMPROVEMENTS PHASE 1
CBS PROJECT #90843

SHEET TITLE:
OVERALL SITE PLAN, SURVEY CONTROL AND SHEETS KEY

PND PROJECT #: 222100 C.A.N. NO.: AECC250

G3

DATE: 09/11/2025

DENOTES DETOUR ROUTES

DENOTES LOCAL ACCESS ROUTES

TRAFFIC CONTROL ZONE WILL BE RELOCATE WITH EACH PHASE

LHMK PHASE 1 CONSTRUCTION TRAFFIC CONTROL GENERAL PLAN APRIL 2026