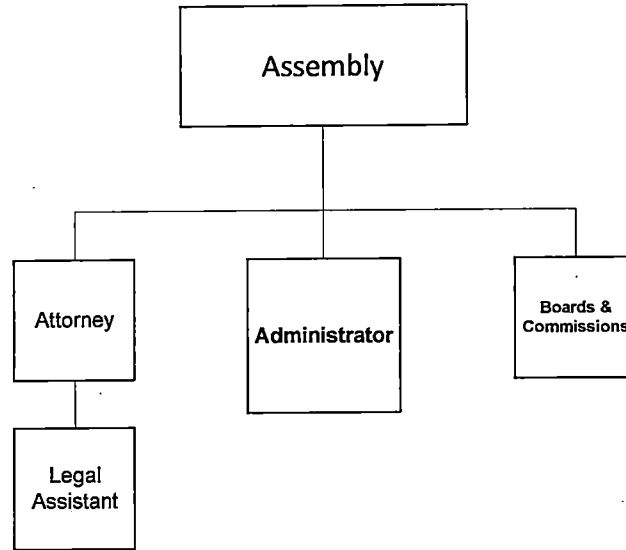
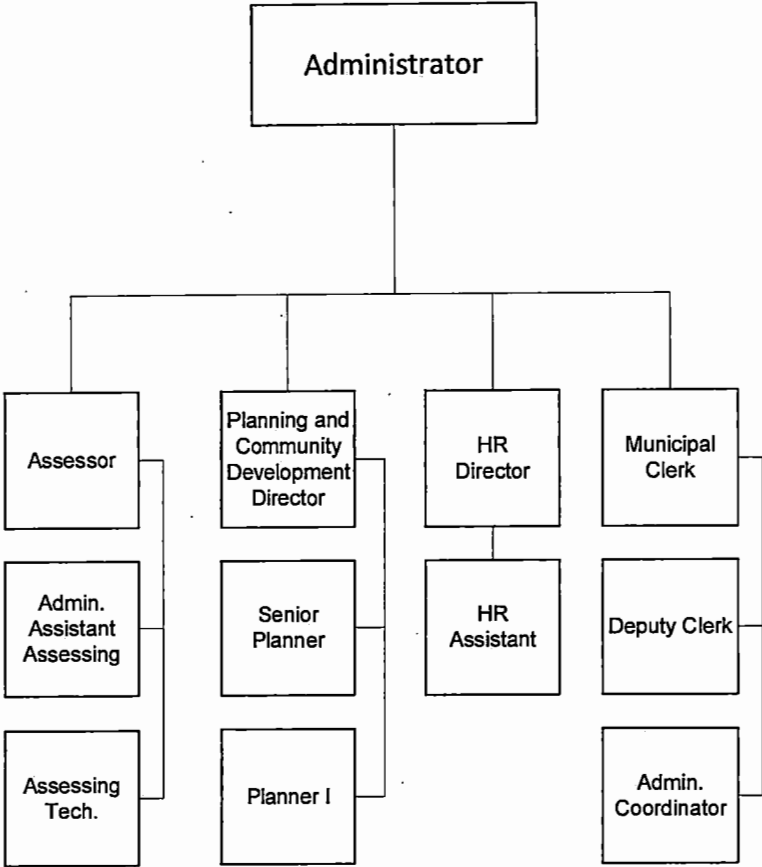


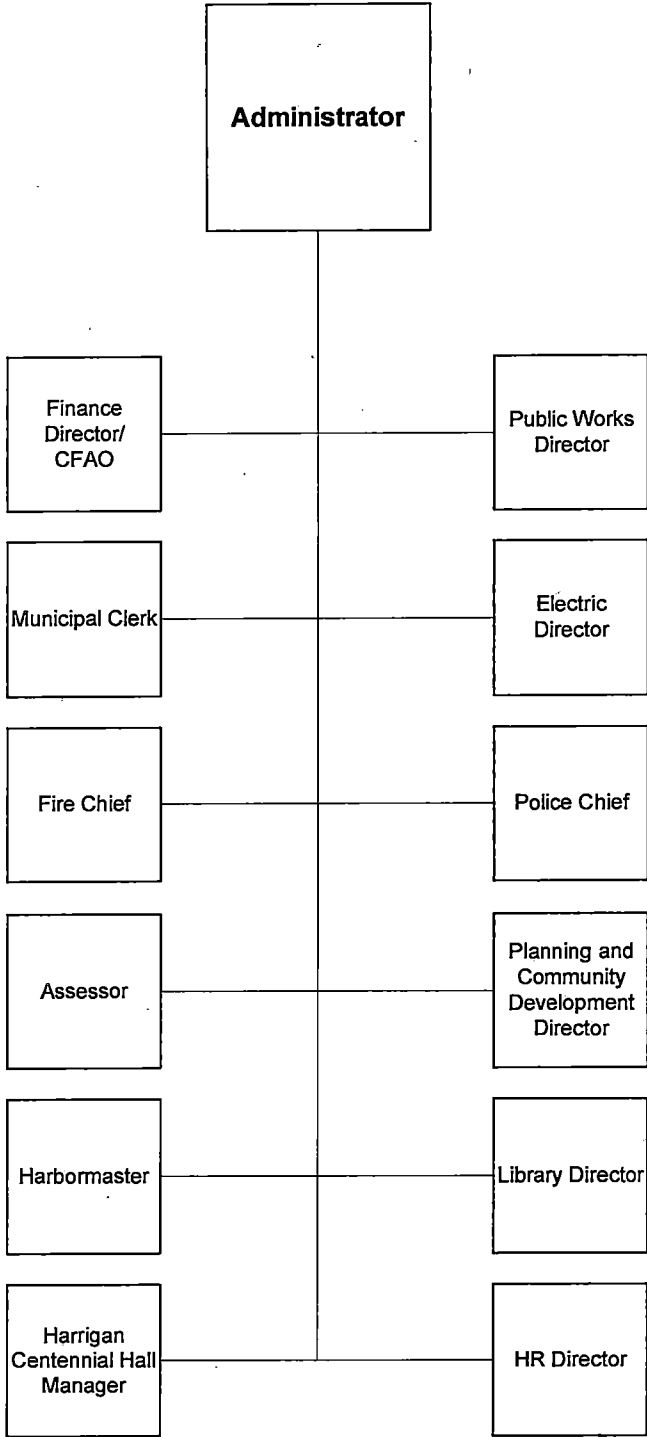
Administrator,
Legal, Boards and
Commissions FY17

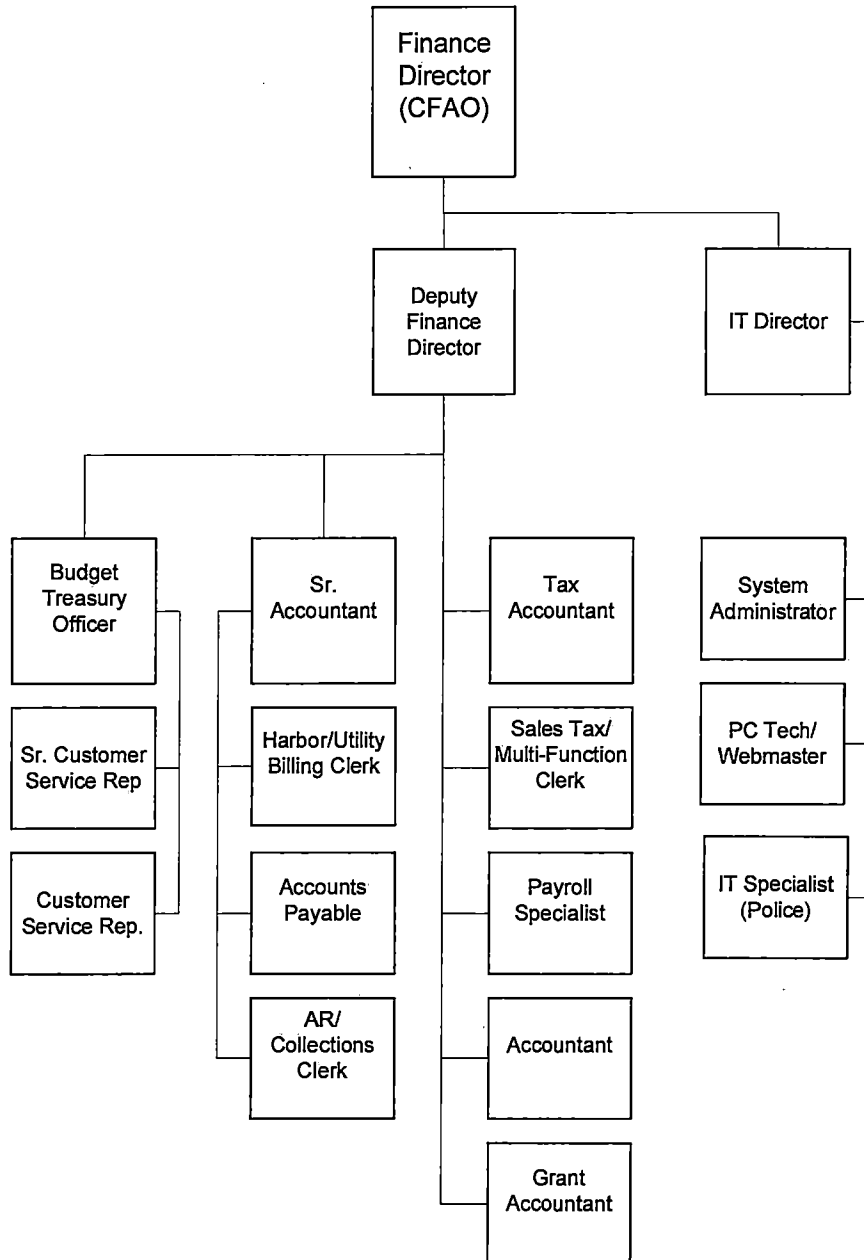


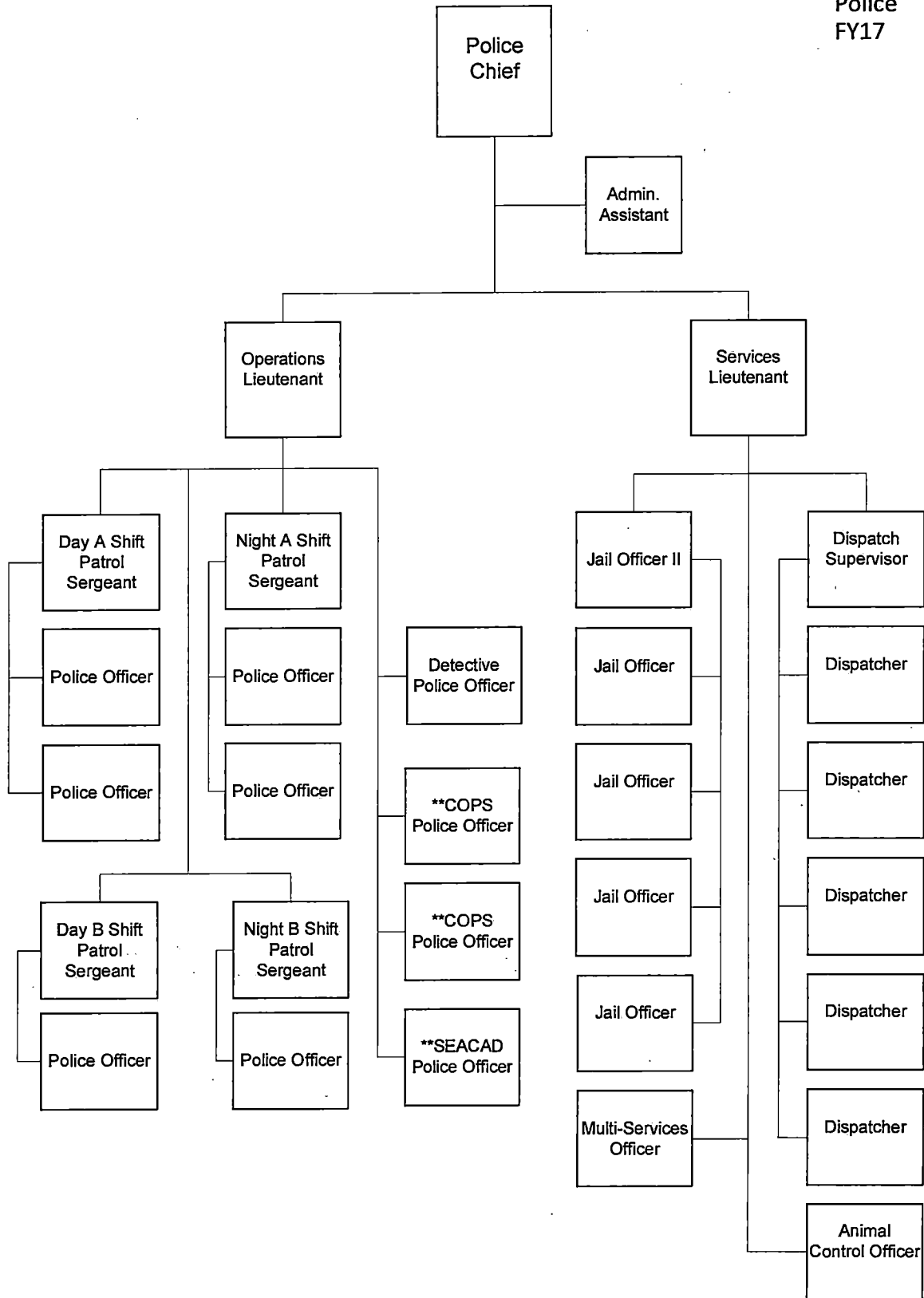
Planning and
Community
Development,
Assessing, Municipal
Clerk, HR FY 17

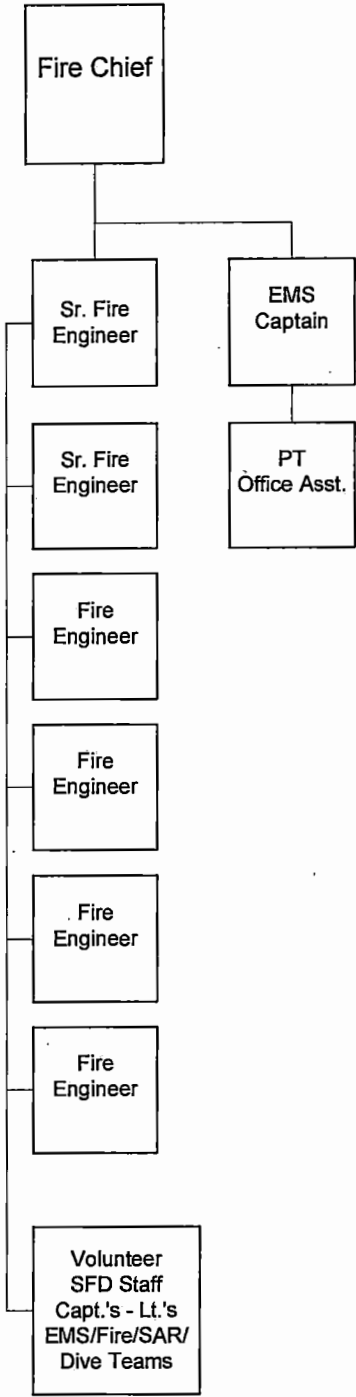


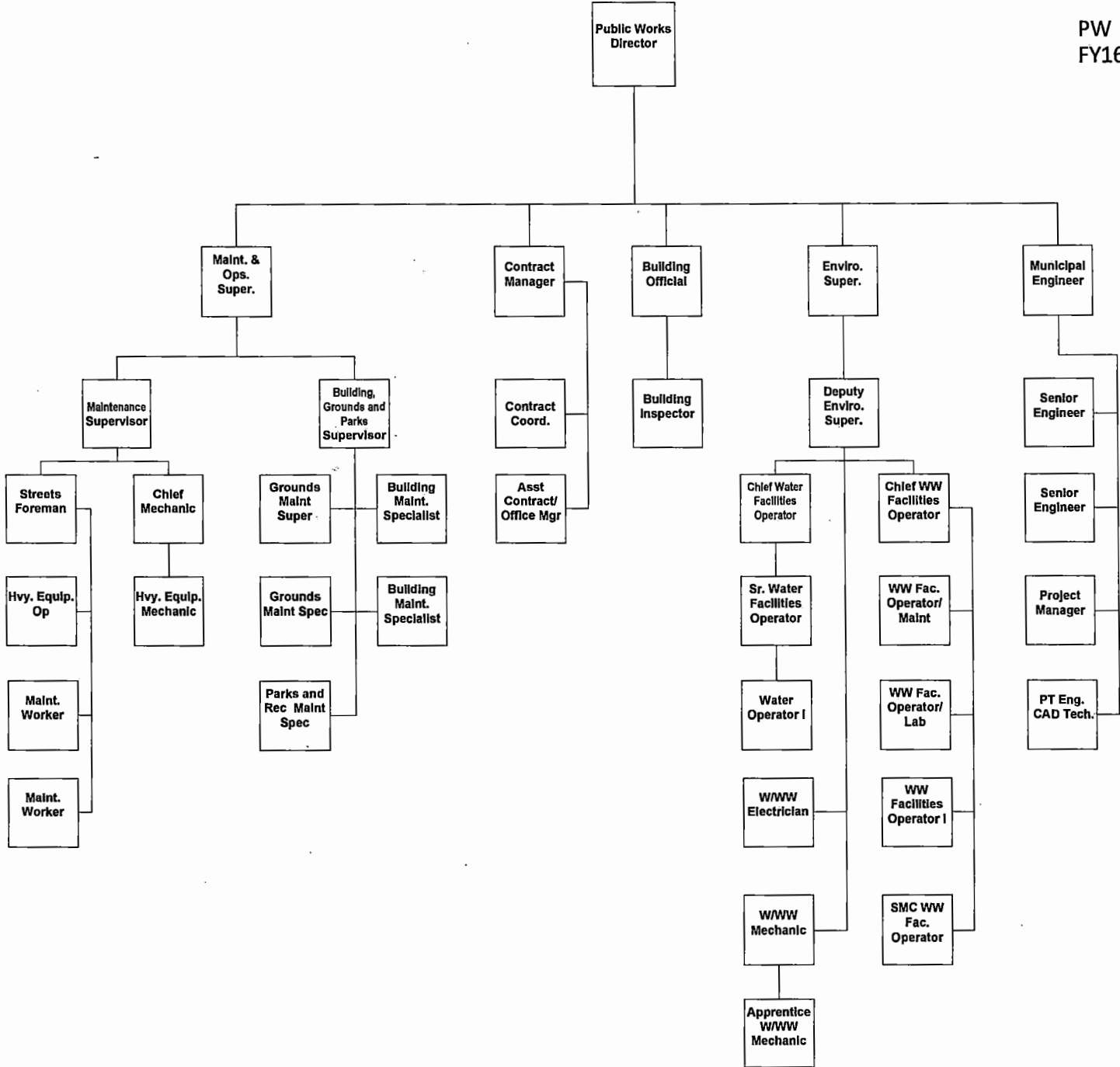
Departments
FY17

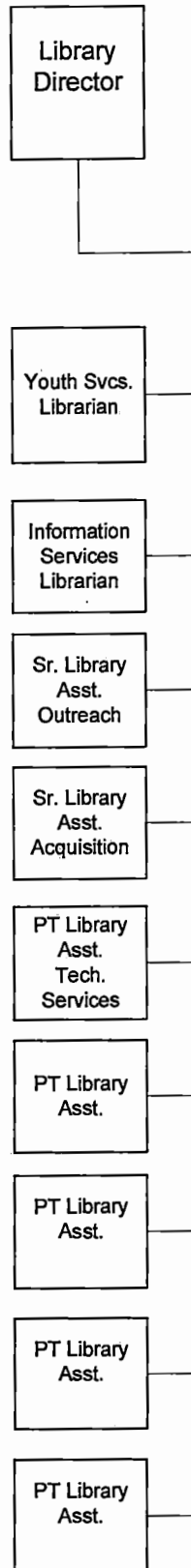




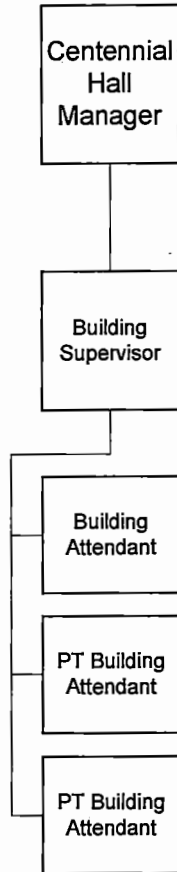




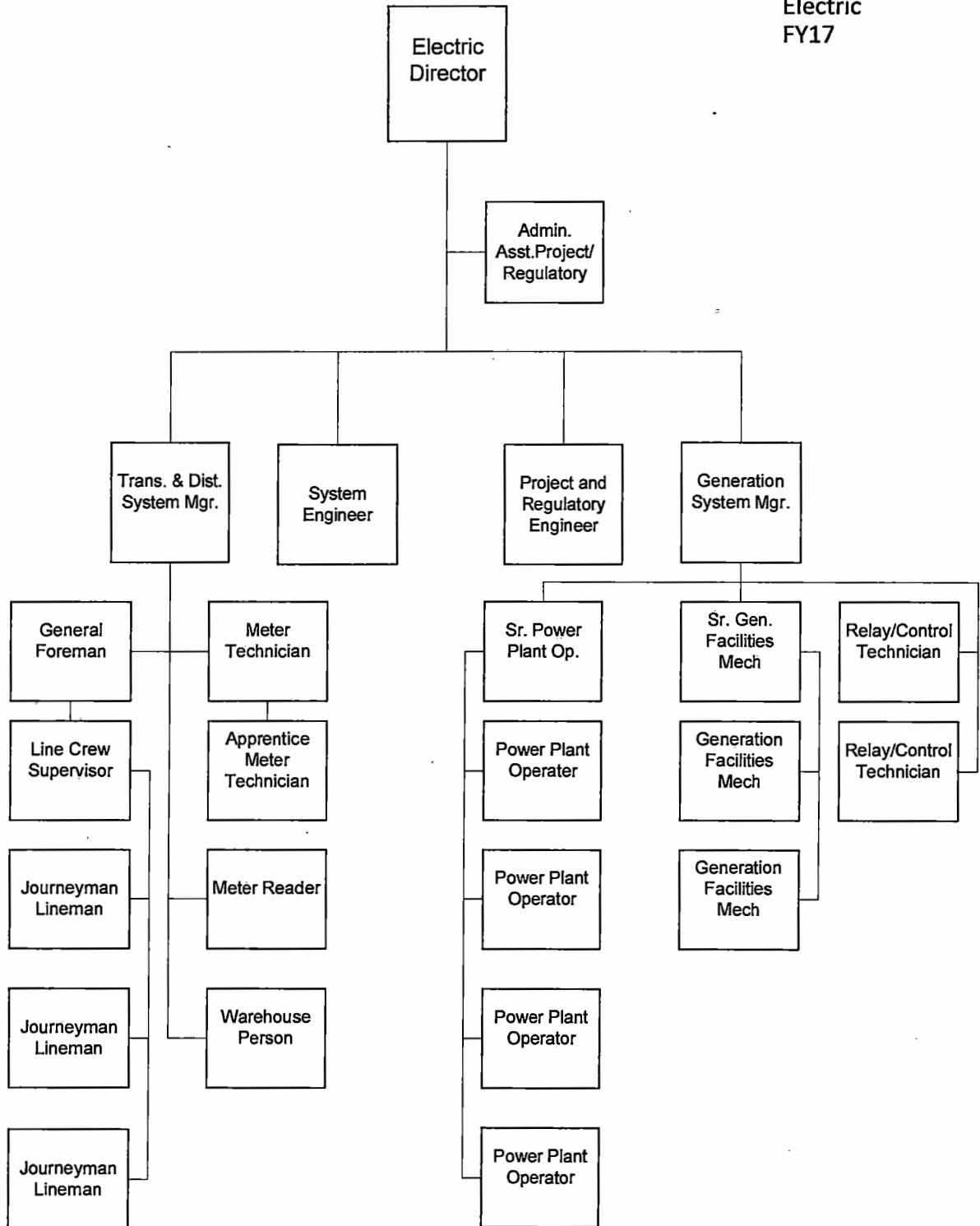




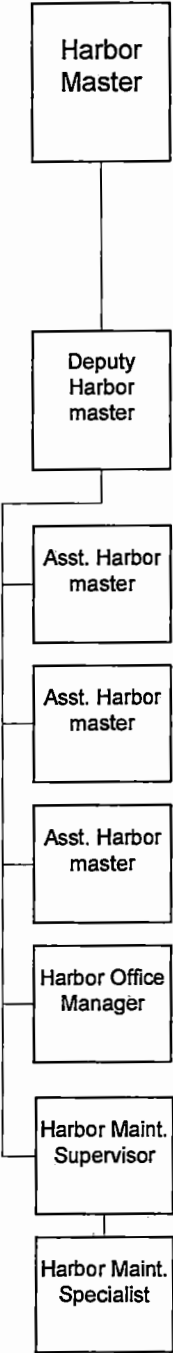
HCH
FY17



Electric
FY17



Harbors
FY17



City and Borough of Sitka

STAFFING TABLE

| Department | Position | Grade | Pay | FTE |
|-----------------------|----------------------------------|-------|----------|-----|
| 001 - Administrator | Administrator | | \$ 60.10 | 1 |
| | Administrative Coordinator | 27 | \$ 24.17 | 1 |
| | Human Resources Assistant | 27 | \$ 27.35 | 1 |
| | Human Resources Director | 37 | \$ 49.44 | 1 |
| 002 - Attorney | Attorney | | \$ 59.25 | 1 |
| | Legal Assistant | 27 | \$ 25.40 | 1 |
| 003 - Municipal Clerk | Deputy Clerk | 28 | \$ 28.82 | 1 |
| | Municipal Clerk | 36 | \$ 41.59 | 1 |
| 004 - Finance | Accountant | 28 | \$ 34.27 | 1 |
| | Accounting Clerk - A/P | | \$ 19.61 | 1 |
| | Accounting Clerk-A/R Collections | | \$ 28.31 | 1 |
| | Accounting Clerk-Tax | | \$ 19.77 | 1 |
| | Budget/Treasury Officer | 33 | \$ 39.04 | 1 |
| | Chief Finance and Admin Officer | 41 | \$ 60.09 | 1 |
| | Customer Service Representative | | \$ 18.27 | 1 |
| | Deputy Finance Director | 36 | \$ 51.97 | 1 |
| | Grant Accountant | 28 | \$ 27.44 | 1 |
| | Payroll Specialist | 26 | \$ 24.99 | 1 |
| | Senior Accountant | 30 | \$ 37.00 | 1 |
| | Sr. Customer Service Represent | | \$ 21.86 | 1 |
| | Tax Accountant | 28 | \$ 26.76 | 1 |
| | Utility/Harbor Billing Clerk | | \$ 21.08 | 1 |
| 005 - Assessing | Administrative Assistant | | \$ 23.63 | 1 |
| | Appraisal Technician | | \$ 21.22 | 1 |
| | Assessor | 36 | \$ 45.92 | 1 |
| 006 - Planning | Planner 1 | 28 | \$ 25.48 | 1 |
| | Planning and Comm. Devel. Direct | 36 | \$ 36.76 | 1 |
| | Senior Planner | 30 | \$ 35.39 | 1 |

STAFFING TABLE

021 - Police

| | | | |
|---------------------------------|----|----------|---|
| Administrative Assistant | 25 | \$ 23.29 | 1 |
| Animal Control Officer | | \$ 22.38 | 1 |
| Dispatch & Records Clerk | | \$ 20.78 | 1 |
| Dispatch & Records Clerk | | \$ 19.78 | 1 |
| Dispatch & Records Clerk | | \$ 21.83 | 1 |
| Dispatch & Records Clerk | | \$ 20.78 | 1 |
| Dispatch & Records Clerk | | \$ 19.78 | 1 |
| Dispatch & Records Supervisor | | \$ 32.69 | 1 |
| Jail Officer | | \$ 19.78 | 1 |
| Jail Officer | | \$ 26.89 | 1 |
| Jail Officer | | \$ 21.83 | 1 |
| Jail Officer | | \$ 25.91 | 1 |
| Jail Officer | | \$ 20.78 | 1 |
| Lieutenant - Operations | 34 | \$ 44.81 | 1 |
| Lieutenant - Services | 34 | \$ 42.64 | 1 |
| Multi-Services Officer | | \$ 31.36 | 1 |
| Police Chief | 38 | \$ 51.90 | 1 |
| Police Officer | | \$ 28.48 | 1 |
| Police Officer | | \$ 27.11 | 1 |
| Police Officer | | \$ 27.11 | 1 |
| Police Officer | | \$ 34.02 | 1 |
| Police Officer | | \$ 27.78 | 1 |
| Police Officer - Detective | | \$ 29.92 | 1 |
| Police Officer - Detective | | \$ 28.48 | 1 |
| Police Officer-*COPS-Fund 100 | | \$ 27.11 | 1 |
| Police Officer-*COPS-Fund 100 | | \$ 27.78 | 1 |
| Police Officer-*SEACAD-Fund 152 | | \$ 31.43 | 1 |
| Sergeant | | \$ 32.09 | 1 |
| Sergeant | | \$ 36.50 | 1 |
| Sergeant | | \$ 32.09 | 1 |
| Sergeant | | \$ 35.79 | 1 |

022 - Fire Protection

| | | | |
|------------------|----|----------|-----|
| EMS/Fire Captain | 32 | \$ 36.91 | 1 |
| Fire Chief | 36 | \$ 47.07 | 1 |
| Fire Engineer | | \$ 22.72 | 1 |
| Fire Engineer | | \$ 32.77 | 1 |
| Fire Engineer | | \$ 22.07 | 1 |
| Fire Engineer | | \$ 21.43 | 1 |
| Fire Engineer | | \$ 22.73 | 1 |
| Fire Engineer | | \$ 27.72 | 1 |
| Office Assistant | | \$ 19.11 | 0.5 |

STAFFING TABLE

031 - Public Works - Administration

| | | | |
|-----------------------------------|----|----------|---|
| Contract Manager | 29 | \$ 32.98 | 1 |
| Contract Coordinator | 28 | \$ 33.43 | 1 |
| Public Works Director | 41 | \$ 60.09 | 1 |
| Maint. & Operations Superintend | 35 | \$ 42.67 | 1 |
| Asst. Contract Coord./Office Mgr. | 25 | \$ 22.17 | 1 |

032 - Engineering

| | | | |
|-------------------------|----|----------|-----|
| Municipal Engineer | 39 | \$ 54.50 | 1 |
| Project Manager | 34 | \$ 44.81 | 1 |
| PT Engineering CAD Tech | | \$ 26.51 | 0.5 |
| Senior Engineer | 36 | \$ 54.59 | 1 |
| Senior Engineer | 36 | \$ 50.70 | 1 |

033 - Streets

| | | | |
|---------------------------|----|----------|---|
| Heavy Equipment Operator | | \$ 25.69 | 1 |
| Maintenance Worker | | \$ 22.89 | 1 |
| Maintenance Worker | | \$ 22.89 | 1 |
| PW Maintenance Supervisor | 32 | \$ 36.02 | 1 |
| Streets Foreman | | \$ 32.75 | 1 |

034 - Recreation

| | | | |
|-------------------------------------|--|----------|---|
| Grounds Maintenance Supervisor | | \$ 28.27 | 1 |
| Parks & Grounds Maint Specialist | | \$ 22.30 | 1 |
| Parks & Recreation Maint Specialist | | \$ 20.16 | 1 |

035 - Building Department

| | | | |
|--------------------|----|----------|---|
| Building Inspector | | \$ 24.36 | 1 |
| Building Official | 29 | \$ 32.18 | 1 |

041 - Library

| | | | |
|----------------------------------|----|----------|------|
| Information Services Librarian | | \$ 28.85 | 1 |
| Library Assistant | | \$ 19.04 | 0.69 |
| Library Assistant | | \$ 18.77 | 0.69 |
| Library Assistant | | \$ 16.15 | 0.38 |
| Library Assistant | | \$ 16.15 | 0.54 |
| Library Assistant -Tech Services | | \$ 16.55 | 0.38 |
| Library Director | 30 | \$ 34.36 | 1 |
| Senior Library Assis.Acquisition | | \$ 21.60 | 0.63 |
| Senior Library Assistant -Loan | | \$ 19.67 | 1 |
| Youth Services Librarian | | \$ 26.25 | 1 |

STAFFING TABLE

043 - Centennial Building

| | | | |
|----------------------------------|----|----------|-----|
| Cent. Building Attendant | | \$ 18.68 | 1 |
| Cent. Building Attendant | | \$ 15.24 | 0.5 |
| Cent. Building Manager | 30 | \$ 36.09 | 1 |
| Cent. Building Supervisor | | \$ 21.20 | 1 |
| Office Assist/Building Attendant | | \$ 15.70 | 0.5 |

200 - Electric

| | | | |
|--------------------------------|----|----------|---|
| Administrative Assistant | 24 | \$ 20.53 | 1 |
| Apprentice Meter Technician | | \$ 35.67 | 1 |
| Electric Utility Director | 44 | \$ 73.08 | 1 |
| General Foreman | | \$ 50.33 | 1 |
| Generation Facilities Mechanic | | \$ 41.72 | 1 |
| Generation Facilities Mechanic | | \$ 41.72 | 1 |
| Generation System Manager | | \$ 60.13 | 1 |
| Line Crew Supervisor | | \$ 47.60 | 1 |
| Line Worker | | \$ 44.58 | 1 |
| Line Worker | | \$ 44.58 | 1 |
| Line Worker | | \$ 44.58 | 1 |
| Meter Reader | | \$ 28.98 | 1 |
| Meter Technician | | \$ 44.58 | 1 |
| Operator | | \$ 41.72 | 1 |
| Operator | | \$ 41.72 | 1 |
| Operator | | \$ 41.72 | 1 |
| Operator | | \$ 41.72 | 1 |
| Project & Regulatory Engineer | 36 | \$ 48.25 | 1 |
| Relay Control Technician | | \$ 44.58 | 1 |
| Relay Control Technician | | \$ 44.58 | 1 |
| Senior Operator | | \$ 44.58 | 1 |
| Sr. Gen Facilities Mechanic | | \$ 45.18 | 1 |
| System Engineer | 40 | \$ 57.23 | 1 |
| T&D System Manager | 40 | \$ 54.44 | 1 |
| Warehouse Person | | \$ 33.42 | 1 |

210 - Water

| | | | |
|----------------------------------|--|----------|---|
| Chief Water Facilities Operator | | \$ 33.54 | 1 |
| Senior Water Facilities Operator | | \$ 30.41 | 1 |
| Water Operator 1 | | \$ 29.68 | 1 |

220 - WWTP

| | | | |
|----------------------------------|----|----------|---|
| Apprentice W/WW Facilities Mech. | | \$ 31.95 | 1 |
| Chief WW Facilities Operator | | \$ 33.54 | 1 |
| Deputy Environmental Superintend | 36 | \$ 45.92 | 1 |
| Environmental Superintendent | 39 | \$ 55.87 | 1 |
| SMC WW Facilities Operator | | \$ 28.96 | 1 |
| W&WW Facilities Mechanic | | \$ 38.73 | 1 |
| W/WW Facilities Electrician | | \$ 45.47 | 1 |
| WW Facilities Operator 1 | | \$ 24.63 | 1 |
| WW Facilities Operator/Lab | | \$ 28.74 | 1 |
| WW Facilities Operator/Maint. | | \$ 26.26 | 1 |

STAFFING TABLE

240 - Harbor

| | | | |
|-------------------------------|----|----------|---|
| Assistant Harbormaster | | \$ 22.70 | 1 |
| Assistant Harbormaster | | \$ 19.61 | 1 |
| Assistant Harbormaster | | \$ 19.62 | 1 |
| Deputy Harbormaster | 27 | \$ 28.05 | 1 |
| Harbor Maintenance Specialist | | \$ 23.80 | 1 |
| Harbor Maintenance Supervisor | | \$ 32.77 | 1 |
| Harbormaster | 34 | \$ 41.59 | 1 |
| Office Manager | | \$ 22.14 | 1 |

300 - MIS

| | | | |
|------------------------------|----|----------|---|
| Information Systems Director | 36 | \$ 40.58 | 1 |
| IT Specialist | | \$ 27.84 | 1 |
| IT System Administrator | 32 | \$ 34.30 | 1 |
| PC Tech / Webmaster | | \$ 24.99 | 1 |

310 - Central Garage

| | | | |
|--------------------------------|--|----------|---|
| Chief Heavy Equipment Mechanic | | \$ 28.93 | 1 |
| Heavy Equipment Mechanic | | \$ 23.87 | 1 |

320 - Building Maintenance

| | | | |
|--------------------------------------|----|----------|---|
| Bldg. Maintenance Specialist | | \$ 28.96 | 1 |
| Bldg. Maintenance Specialist | | \$ 28.96 | 1 |
| Building, Parks & Grounds Supervisor | 32 | \$ 36.02 | 1 |